

shoreline 4x4
4WD ACCESSORIES

Shoreline 4x4 Extreme Series Bullbar X-1



Fitting instructions for Mazda BT50

Front TOW points only - Rated to 3.75T - NOT FOR SNATCHING

CAUTION : INNER GAIRD CUT PARTIALLY EXPOSES AIR INTAKE. SECURE GAIRD & TAKE CARE DURING WATER CROSSING. TURN INTAKE UPWARDS OR GET A SNORKEL FOR WATER CROSSINGS

www.slx4x4.com.au

(08) 9444 2946

126 Hector St W - OSBOURNE PARK W.A. 6017

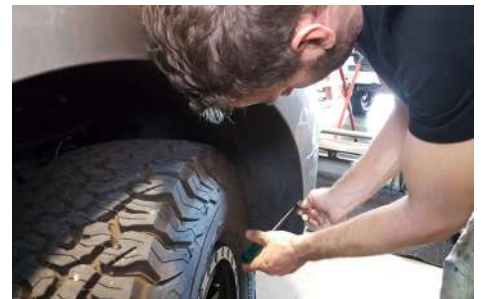
shoreline 4 X 4

4WD ACCESSORIES

1. Congratulations on purchasing your very own Shoreline 4x4 Extreme Series Bullbar. To start, clear an area around the front of your car and unwrap the bar.



2. With the bar unwrapped, you're ready to remove the bumper. Start by removing the four clips either side holding the inner wheel lining to the bumper.



3. Now pull the edges of the bumper away from the car. The clips will pop away and this is completely normal.



4. Remove the clips holding the top of the grill.



www.slx4x4.com.au

(08) 9444 2946

126 Hector St W - OSBOURNE PARK W.A. 6017

shoreline 4 X 4

4WD ACCESSORIES

5. Next, pull the grill away from the bumper, there are tabs shown that may need to be pried away with a flat head screwdriver.



6. Undo the bolts next to the headlights that were hidden behind the grill.



7. Undo the bolts holding the bottom of the bumper to the car.



8. While you're down below, remove the factory bash plate, making sure you keep the two rear bolts to use later.



www.slx4x4.com.au

(08) 9444 2946

126 Hector St W - OSBOURNE PARK W.A. 6017

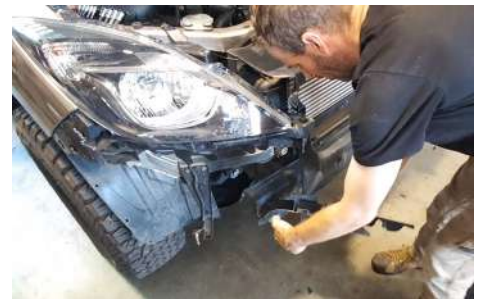
shoreline 4 X 4

4WD ACCESSORIES

9. Carefully pull the bumper away from the car, taking care to disconnect the fog lights.



10. Tear away the plastic air dam on the impact bar.



CAUTION : INNER GAURD CUT PARTIALLY EXPOSES AIR INTAKE. SECURE GAURD & TAKE CARE DURING WATER CROSSING. TURN INTAKE UPWARDS OR GET A SNORKEL FOR WATER CROSSINGS

11. Unbolt the crash bar and dispose, this will be replaced by the bullbar mounts.



12. Unbolt the lower air dam mount.



www.slx4x4.com.au

(08) 9444 2946

126 Hector St W - OSBOURNE PARK W.A. 6017

shoreline 4 X 4

4WD ACCESSORIES

13. Remove the "L" shaped metal bracket mounted behind the air dam either side.



14. Tear away the plastic moulding that is between the chassis rail and the condenser.



15. Refit the lower air dam mount.



16. Trim the factory air dam as shown, cutting diagonally up.



www.slx4x4.com.au

(08) 9444 2946

126 Hector St W - OSBOURNE PARK W.A. 6017

shoreline 4 X 4

4WD ACCESSORIES

17. Remove and dispose of the bracket that secures the inner wheel liner to the body.



18. Trim the inner wheel liner as shown, following the angle of the metal.



19. Remove the two piece plastic moulding below the headlights.



20. Strip the factory fog light wiring ready to solder on the new LED fog lights.



www.slx4x4.com.au

(08) 9444 2946

126 Hector St W - OSBOURNE PARK W.A. 6017

shoreline 4 X 4

4WD ACCESSORIES

21. Now mount the bar bracket using the four factory bolts as well as eight of the supplied stainless nuts, washers and bolts.



22. With help, mount the bar to the bracket with the supplied stainless steel hardware.



23. Solder on the new LED fog lights and test.



24. Using the two factory bolts for the rear and the supplied hardware for the front, mount your Extreme Series bash plate.



www.slx4x4.com.au

(08) 9444 2946

126 Hector St W - OSBOURNE PARK W.A. 6017

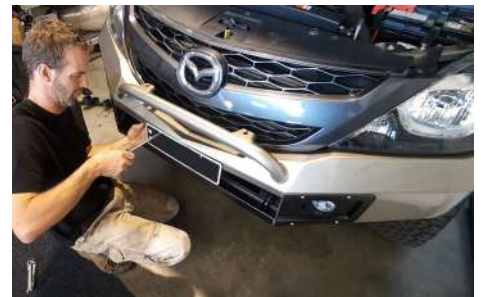
shoreline 4 X 4

4WD ACCESSORIES

25. Refit the grill in the reverse order.



26. Mount your license plate and you're ready to hit the track!



www.slx4x4.com.au

(08) 9444 2946

126 Hector St W - OSBOURNE PARK W.A. 6017