



Shoreline 4x4

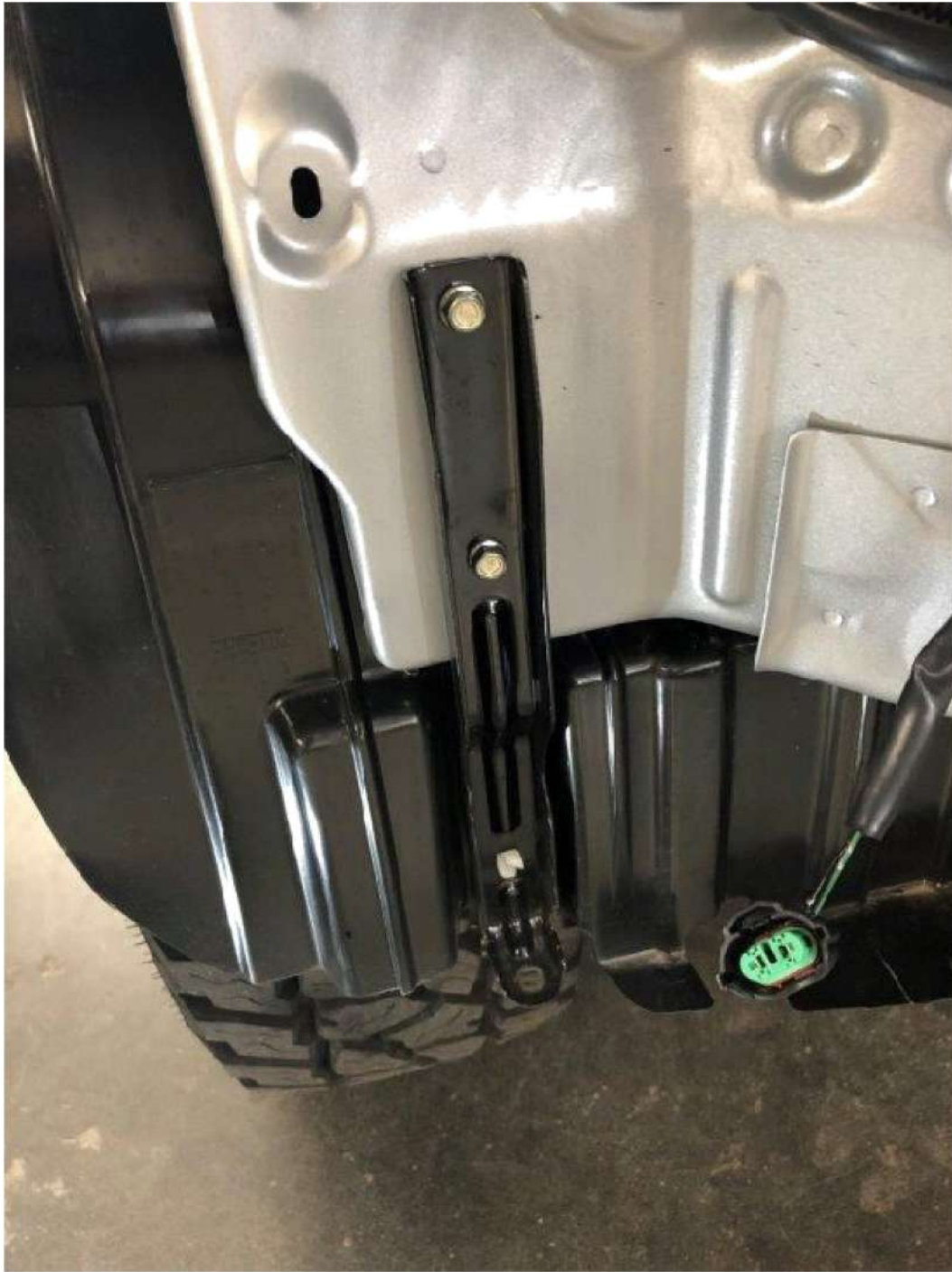
Extreme Series Bullbar X-1

Install notes: mux 2017 on has softer body mounts than other cars, movement between the Chassis and body can be anywhere from 15-20mm. We recommend a minimum 10-15mm gap and the use of pinch weld (not supplied).

May require Slight Grille Trim in order to get bar close to car. If grill sits close to bar metal use adhesive tape for protection of paint

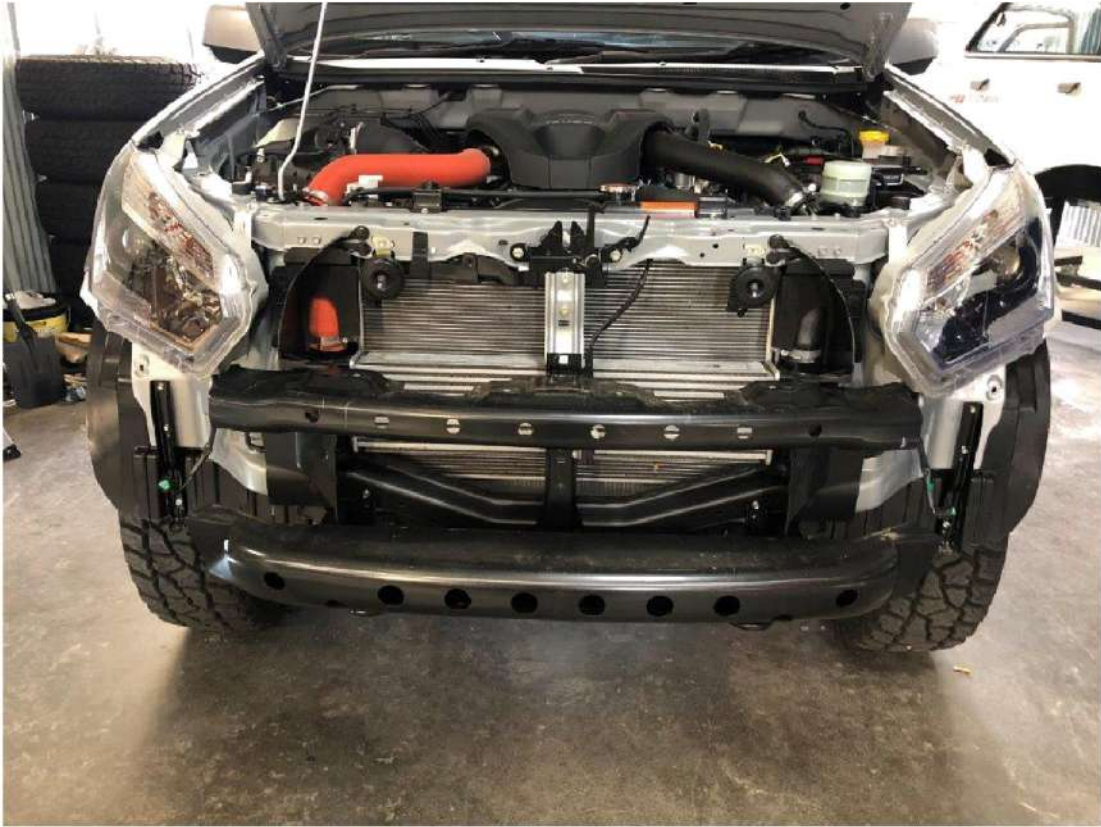
1. Remove number plate and grill
2. Remove 4 clips on centre upper bull bar
3. Remove clips under wheel arch that attach to bull bar
4. Remove clips and screws under bull bar
5. Remove small bash plate
6. Gently pull at edge of bumper to release bumper from under head lights
7. Remove bumper and disconnect fog light from loom
8. Remove white plastics from edge of body next to guard
9. Remove front lower chassis support bar
10. Remove inner guard metal brackets
11. Remove metal bracket from front chassis
12. Remove upper bumper support bar (be careful of all sensors) keep aside.
13. Install winch cradle making sure it is central along with chassis support collar
14. Drill out 4 spot welds from previously removed upper support bar (see picture)
15. Paint and reassembled with 10mm bolts as shown in picture.
16. Install grill support and clip in sensor.
17. Fit bull bar and tighten – see final images last pages
18. Refit grill and number plate
19. Fit bash plate
20. Wiring in fog lights and tighten & Trim inner guards to suit





depending on how you align your bar you may find metal clash towards the back lip directly under the gaurd, you can remove 10mm of the white metal, approx 10mm down for approx 30-40mm

Suggest you remove before installation of the bar.



If you need further adjustment left to right you may need to flatten the bump on the chassis front member & install the Chassis collar bracket.



We recommend the use of 10mm foam on the sides between the bar and the car to help get the bar even.



Typically, we cut the grille and apply some flat style pinch weld to get the bar nice and close to the car





We recommend rubber pinch weld available on our store for \$29 or clark rubber to provide infill between bulbar and guards/headlights.