

**Shoreline 4x4**  
**4WD ACCESSORIES**

# Shoreline 4x4 Extreme Series Bullbar X-1



## Fitting instructions for Ford Ranger PX Mk II & MK3

**Front TOW points only - Rated to 3.75T - NOT FOR SNATCHING**

[www.slx4x4.com.au](http://www.slx4x4.com.au)

**(08) 9444 2946**

126 Hector St W - OSBORNE PARK W.A. 6017

# shoreline 4 X 4

**4WD ACCESSORIES**

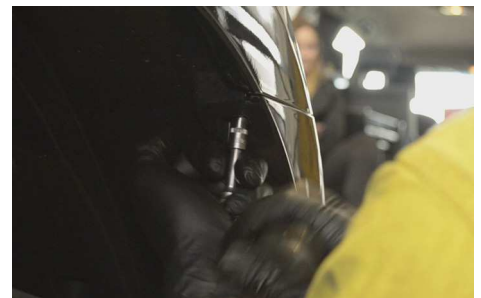
1. Congratulations on purchasing your very own Shoreline 4x4 Extreme Series Bullbar. To start, clear an area around the front of your car and unwrap the bar.



2. With the bar unwrapped, unbolt the factory bash plate.



3. Unbolt the bumper from the front quarter panels and remove the clips holding the inner liner to the bumper.



4. Remove the four bolts on the under side of the bumper.



**[www.slx4x4.com.au](http://www.slx4x4.com.au)**

**(08) 9444 2946**

**126 Hector St W - OSBOURNE PARK W.A. 6017**

# shoreline 4 X 4

## 4WD ACCESSORIES

5. Remove your license plate from the factory bumper.



6. Carefully remove the top grill plastic, pushing the plastic tags with a flat head screw driver as seen in the next image below.



7. \*Plastic tag



8. Unbolt the top grill mount.



[www.slx4x4.com.au](http://www.slx4x4.com.au)

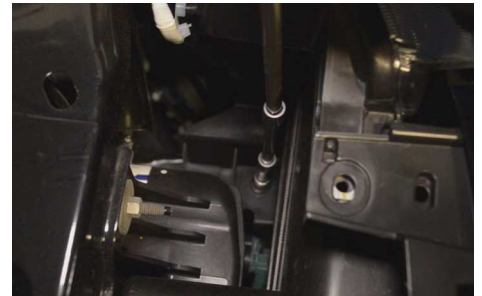
(08) 9444 2946

126 Hector St W - OSBOURNE PARK W.A. 6017

# shoreline 4 X 4

## 4WD ACCESSORIES

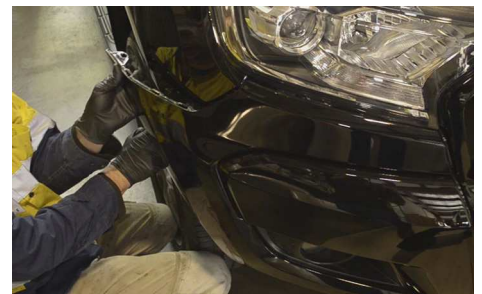
9. Unbolt the lower grill mount, you will need a long extension and socket to reach this bolt.



10. Carefully remove the plastic push clips. These are hard to locate but are right behind the mesh section of the grill.



11. Pop the front bumper away from the car.



12. Remove the lower bolts holding the factory air dams. Do not remove the hole air dams.



[www.slx4x4.com.au](http://www.slx4x4.com.au)

(08) 9444 2946

126 Hector St W - OSBOURNE PARK W.A. 6017

# shoreline 4 X 4

## 4WD ACCESSORIES

13. Tear away the plastic on the crash bar and dispose.  
Remove the factory radar unit from the impact bar.



14. Unbolt and remove the factory crash bar.



15. Remove the metal L brackets that are visible with the air dam moved out the way. Once removed, bolt the air dam back on securely.



16. Mark and trim the factory air dams as shown.  
If PX3 see last page



[www.slx4x4.com.au](http://www.slx4x4.com.au)

**(08) 9444 2946**

**126 Hector St W - OSBOURNE PARK W.A. 6017**

# shoreline 4 X 4

**4WD ACCESSORIES**

17. Take care and pry away the metal antenna.



18. Unbolt the metal bracket that secures the inner wheel liner to the car.



19. Cut the cable ties holding the antenna wiring to the car ready to relocate.



20. Mount the antenna onto the air dam using the factory clip for the lower mount and drill a new hole to push in one of the clips spare from the bumper.



**[www.slx4x4.com.au](http://www.slx4x4.com.au)**

**(08) 9444 2946**

**126 Hector St W - OSBOURNE PARK W.A. 6017**

# shoreline 4 X 4

**4WD ACCESSORIES**

21. Separate the bar from the bracket.



22. Now mount the bracket using the four factory bolts and eight supplied nuts and bolts.



23. Mark and trim the inner wheel guard.  
IF PX3 SEE LAST PAGE



24. Pry the radar unit from the bracket and unscrew the star head bolts.



PX3



PX3



PX2

[www.slx4x4.com.au](http://www.slx4x4.com.au)

**(08) 9444 2946**

**126 Hector St W - OSBOURNE PARK W.A. 6017**

# shoreline 4 X 4

## 4WD ACCESSORIES

PX2

25. Mount the radar unit to the bar using the supplied hardware.

INSTALL PX3 AS SHOWN



26. Remove the grill from the factory bumper by pushing the clips.



27. Mark and trim the grill as shown. Take care as this is a double skinned grill, a grinder or reciprocating saw will be best suited.

PX3 CUTTING LEVEL SHOULD BE CHECKED PRIOR



28. Remove the plastic mouldings from underneath the headlights.



[www.slx4x4.com.au](http://www.slx4x4.com.au)

(08) 9444 2946

126 Hector St W - OSBOURNE PARK W.A. 6017



# shoreline 4 X 4

## 4WD ACCESSORIES

29. Mount the grill back onto the car reusing the factory fittings.



30. With help, carefully mount the bar to the bracket using the supplied hardware.

RECOMMENDED GAP IS 10-20MM. ADJUST TO SUIT  
USE PINCH WELD IF YOU PREFER NO GAP



31. Remove the front sensor wiring from the factory bar and secure to the front of the car.



32. Fit the front parking sensors reusing the factory sensor surrounds. Side wing sensor holes will need to be elongated with a die grinder to suit the angled shape of the sensor surround. You will need to trim the nibs off the middle two sensor clips as shown to ensure correct fitment.



[www.slx4x4.com.au](http://www.slx4x4.com.au)

(08) 9444 2946

126 Hector St W - OSBOURNE PARK W.A. 6017

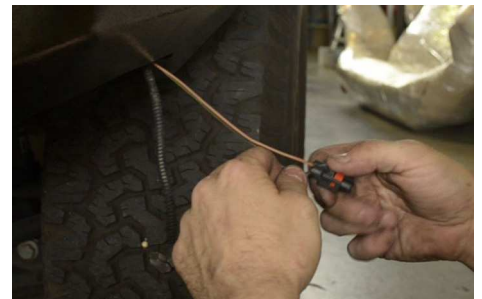
# shoreline 4 X 4

**4WD ACCESSORIES**

33. Fit the new bash plate over the bullbar and mount using the supplied nuts and bolts.



34. Wire in the fog lights, test and you're ready to go!



35. PX3 TRIM TO SUIT AS SHOWN



[www.slx4x4.com.au](http://www.slx4x4.com.au)

**(08) 9444 2946**

**126 Hector St W - OSBOURNE PARK W.A. 6017**